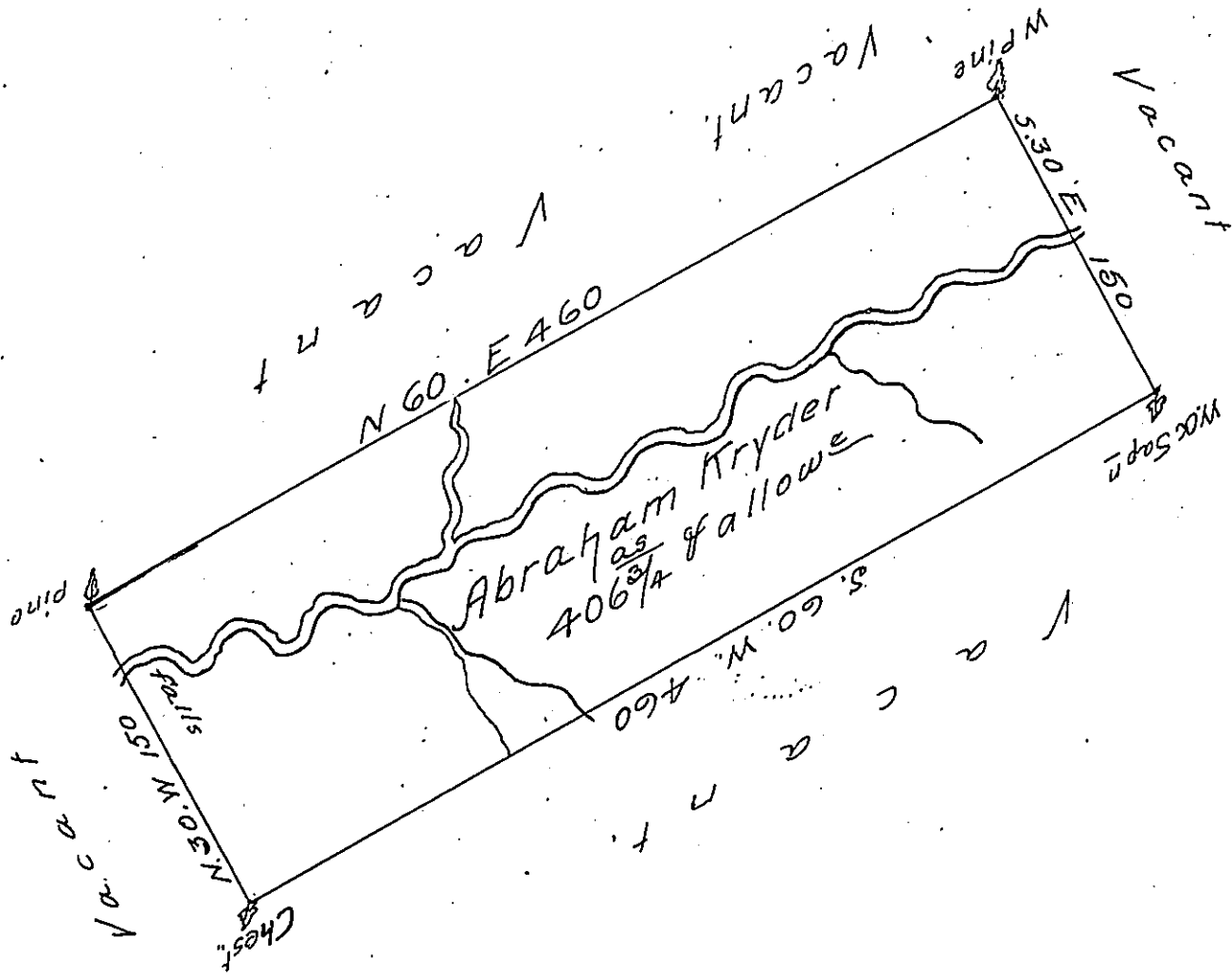


Denison Twp,
LUZERNE



Draft of a tract of land Called Kryders Choice situate on main West Branch of Nescopeck Creek above the forks in the County of Luzerne (formerly Northumberland).

Containing four hundred & six acres ³/₄ allowance of six p cent for roads &c. Surveyed for Abraham Kryder the 11th day of June 1789 in pursuance of a Warrant dated the 12th day of Decr 1786

by W^m Gray D.S.

Daniel Brodhead Esqr
Surv^r Gen^l

IN TESTIMONY that the above is a copy of the original remaining on file in the Department of Internal Affairs of Pennsylvania, made conformably to an Act of Assembly approved the 16th day of February, 1833, I have hereunto set my Hand and caused the Seal of said Department to be affixed at Harrisburg, this eighteenth day of July 1905

Loaen D. Brown
Secretary of Internal Affairs.